

# QuietSwing

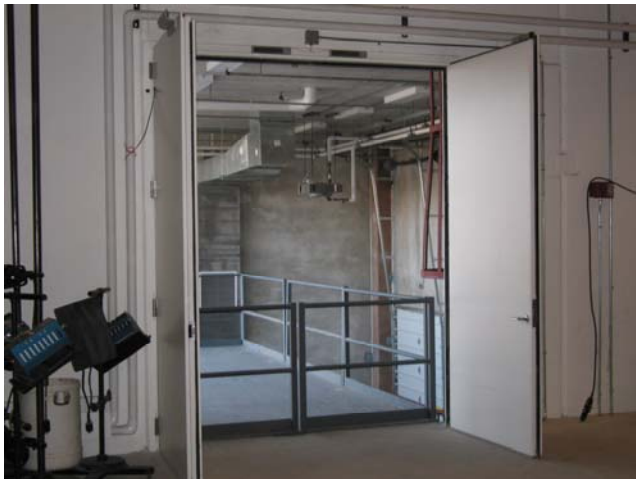
## Sound Control Doors

### Industrial

#### Single-Leaf, Double-Leaf or Bi-Fold Designs



8' x 8' STC 48 Double-Leaf Door piggy-backed onto larger STC 60, fire rated, projectile rated, blast rated door—paired with an STC 62, projectile and blast resistant 4' x 8' window system.  
Wixom, MI



8' x 10' STC 50 Double-Leaf Doors  
Bloomington, IL

- Test Facilities
- Engine Test Cells
- Quiet Rooms
- Product Jury Rooms
- Vibration Test Labs
- Mechanical Equipment Rooms
- Machinery Enclosures
- Control Rooms
- Conference Rooms
- Secure Areas
- Sensitive Compartmented Information Facilities (SCIF)
- Factory Offices
- Test Chambers
- Shake—Rattle—Roll Rooms
- Power Generation
- Compressor Rooms
- Gen. Set Rooms



4' x 8' STC 50 Single-Leaf Door with 4" x 25" ADA window and 3' x 8' filler panel.  
Fond du Lac, WI



6' x 7' STC 52 Double-Leaf Door with 12" x 12" double glazed windows.  
New York, NY

**NoiseBarriers, LLC. is your turnkey provider for all sound control door needs.**

- Guaranteed acoustic performance
- All doors are tested at Riverbank Laboratories, an independent NVLAP approved testing facility
- All hardware, seals and hinges are factory installed
- Door includes custom cam-lift hinge design, eliminating the need for a threshold in most applications
- Adjustable mortised bottom seal allows the door to adapt to site floor conditions
- Double magnetic seals at head and jambs
- Split-frame assembly allows installation into existing openings
- All doors with vision panels are factory glazed prior to shipment
- Designed to work with standard building hardware, factory installed if desired
- Ease of operation conforms to ADA
- Available in single-leaf, double-leaf and bi-fold designs
- Wood veneer finish available

**All door and frame components are tested as a complete assembly prior to shipment.**

**Acoustic Performance Data**

	1/3 Octave Band Center Frequency, Hz																	STC	
	100	125	160	200	250	315	400	500	630	800	1k	1.25k	1.6k	2k	2.5k	3.15k	4k		5k
Sound Transmission Loss Data, dB																			
QS-45	28	29	34	33	33	35	40	41	44	47	48	47	48	48	47	48	50	41	45
QS-48	28	36	35	36	41	42	45	45	45	50	51	51	52	50	50	50	52	53	48
QS-50	27	37	37	38	42	44	47	50	49	49	49	49	49	51	52	53	55	57	50
QS-52	34	39	37	40	43	45	48	51	52	53	53	50	51	54	58	59	61	59	52
QSL-51	36	34	40	43	44	47	47	47	50	50	53	52	52	52	54	57	60	63	51

All tests performed by Riverbank Acoustical Laboratories, an independent NVLAP accredited acoustical testing facility. The test method conforms with ASTM Designations E90-02 and E413-87.

 **NOISE BARRIERS, LLC.**  
[www.noisebarriers.com](http://www.noisebarriers.com)

2001 Kelley Court  
Libertyville, IL 60048  
Phone: (847) 843-0500  
Fax: (847) 843-0501